

PARKLANE MOTOR LODGE



We are an ideal place for a longer stay - we have a large swimming pool and children's splash pool, mini gym, guest laundry, breakfast room and ample off-street car parking. There are many great cafes and restaurants a short stroll away We have an air-conditioned conference room seating up to 40 people theatre-style.



Parklane has a great location in Greenlane/Epsom - **Only five minutes drive away from Eden Park Stadium (3.4km away as the crow flies)**. Just 4km to Auckland CBD and 11 km to the airport.

FACILITIES

We are an ideal place for a longer stay - we have a large swimming pool & children's splash-pool, mini-gym, guest laundry, internet desk, breakfast room, "Heat and Eat" evening meals available and free ample off-street car parking. Internet access available for guests.

There are many great cafes and restaurants a short stroll away, a large supermarket nearby, and the bus stop to Auckland city centre is just a 2 minute walk away.



ACCOMMODATION

All our rooms have kitchenettes & microwaves, en-suites, hairdryers, iron and ironing boards, clock radios, electric blankets & mini-bars.

Executive Rooms:

(1 king Bed, ensuite bathroom with Spa Bath over shower, private balcony, Freeview TV, Wireless Internet, Mini Bar and kitchenette with microwave, fridge toaster, cutlery and cookery)



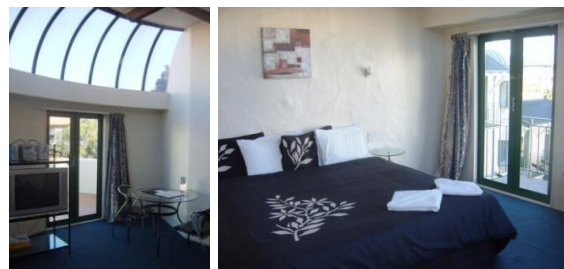
Penthouse Spa:

1 King Bed (2 rooms with a foldout couch), Ensuite bathroom with Spa bath separate than shower, Skylight, Spacious Private Balcony, Freeview TV, Wireless Internet, Mini Bar and kitchenette with microwave, fridge toaster, cutlery and cookery)



Family Penthouse Spa:

1 King. 2 single beds and a foldout couch, Ensuite bathroom with Spa bath separate than shower, Skylight, Spacious Private Balcony, Freeview TV, Wireless Internet, Mini Bar and kitchenette with microwave, fridge toaster, cutlery and cookery)



LOCATION

222 Greenlane West, Greenlane, Auckland

Parklane Motor Lodge is **only 3.4km away from Eden Park Stadium** (as the crow flies)

